

KT-10 Magnetic Susceptibility and Conductivity Meters

Magnetic Susceptibility Meters · Conductivity Meters · Combined Magnetic Susceptibility/Conductivity Meters

The KT-10 meters are a line of handheld instruments that measure the magnetic susceptibility and/or conductivity of a geological sample or core. The meters are available in circular and rectangular coil designs to measure large or small sized samples, respectively. The KT-10 meters produce repeatable results, and include features such as corrections for split and full cores, the ability to input information to correlate measurements to their appropriate depths, a built-in microphone to record voice notes, and the GeoView data management/visualization software. With its compact and rugged design, the KT-10 meters are ideal instruments for use in the field, core shack, or lab.

Benefits:

- Stand-alone units with display and data storage.
- High sensitivity for magnetic susceptibility (10^{-6} SI units) and conductivity (1 S/m).
- Two modes of operation: discrete measurements or continuous scanning (20 readings per second).
- Split and full core corrections for standard drill rod diameters (AQ, BQ, HQ, NQ and PQ) and non-standard sizes (2.4 to 12 cm).
- Borehole logging mode to correlate measurement results to their appropriate depths.
- Data running average and standard deviation values displayed during discrete measurements; data averages and maximum values provided during scanning.
- Pin mode to measure samples with uneven surfaces (available with circular coil designs only).
- Built-in microphone to record voice notes with measurements.
- GeoVision App to view scanner profiles in real-time on an Android operated device.
- GeoView software to organize and visualize data on a PC.
- Upgrades and support available via the internet



KT-10 v2 Magnetic Susceptibility Meter
(Circular Coil)



KT-10 S/C Magnetic Susceptibility/Conductivity Meter
(Rectangular Coil)



KT-10 v2
(Rectangular Coil)



KT-10 S/C
(Circular Coil)

KT-10 Models

Dedicated Magnetic Susceptibility Meters

| KT-10 v2 | KT-10R v2 |
|--|--|
| <ul style="list-style-type: none"> • <u>Circular</u> coil design • Sensitivity: 10^{-6} SI units • Measurement range: 0.001×10^{-3} to 1999.99×10^{-3} SI units • Pin mode available for measuring uneven surfaces • KT-10 Plus (Optional) * | <ul style="list-style-type: none"> • <u>Rectangular</u> coil design • Sensitivity: 10^{-6} SI units • Measurement range: 0.001×10^{-3} to 1999.99×10^{-3} SI units • KT-10R Plus (optional) * |

Dedicated Conductivity Meters

| KT-10 C | KT-10R C |
|--|---|
| <ul style="list-style-type: none"> • <u>Circular</u> coil design • Absolute conductivity meter, calibrated using multi-point algorithm • Sensitivity: 1 S/m • Measurement range: 1 to 100,000 S/m • Pin mode available for measuring uneven surfaces • KT-10 Cx (optional) * | <ul style="list-style-type: none"> • <u>Rectangular</u> coil design • Absolute conductivity meter, calibrated using multi-point algorithm • Sensitivity: 1 S/ m • Measurement range: 1 to 100,000 S/m • KT-10R Cx (optional) * |

Combined Magnetic Susceptibility/Conductivity Meters

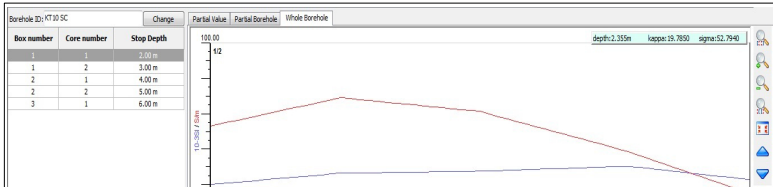
| KT-10 S/C | KT-10R S/C |
|---|--|
| <ul style="list-style-type: none"> • <u>Circular</u> coil design • Sensitivity: <ul style="list-style-type: none"> • Magnetic susceptibility 10^{-6} SI units • Conductivity: 1 S/m • Measurement range: <ul style="list-style-type: none"> • Magnetic susceptibility: 0.001×10^{-3} to 1999.99×10^{-3} SI units • Conductivity: 1 to 100,000 S/m • Pin mode available for measuring uneven surfaces • KT-10 Plus S/C (optional) * • KT-10R S/Cx (optional) * • KT-10R Plus S/Cx (optional) * | <ul style="list-style-type: none"> • <u>Rectangular</u> coil design • Sensitivity: <ul style="list-style-type: none"> • Magnetic susceptibility 10^{-6} SI units • Conductivity: 1 S/m • Measurement range: <ul style="list-style-type: none"> • Magnetic susceptibility: 0.001×10^{-3} to 1999.99×10^{-3} SI units • Conductivity: 1 to 100,000 S/m • KT-10 Plus S/C (optional) * • KT-10R S/Cx (optional) * • KT-10R Plus S/Cx (optional) * |

* See the Options section on the next page for a full description of the Plus and Cx Options available

GeoView Software

| Id | Time | Kappa/Conc. | Average succ. +/- std | Sigma/Conc. | Average cond. +/- std | Information | Latitude | Longitude | Altitude |
|----|------------|------------------|-----------------------|-----------------|------------------------|--------------|---------------|---------------|----------|
| 62 | 3:01:34 PM | 2.7600 [10-35] | 2.7670 +/- 0.0090 | 2405.9520 [S/m] | 2413.3680 +/- 18.3810 | | | | |
| 63 | 3:05:14 PM | 195.0110 [10-35] | | 1184.4030 [S/m] | | | | | |
| 64 | 3:05:24 PM | 224.6250 [10-35] | 209.5870 +/- 20.6120 | 1410.5100 [S/m] | 1297.5700 +/- 159.4840 | | | | |
| 65 | 3:08:56 PM | 64.0000% | | 0.0000 [S/m] | | Kappa Curve1 | | | |
| 66 | 4:31:07 PM | 4.4720 [10-35] | | | | | 43e51 22.95°N | 79e27 28.68°W | 228m |
| 67 | 4:31:13 PM | 4.2070 [10-35] | | | | | 43e51 22.96°N | 79e27 28.70°W | 228m |
| 68 | 4:31:19 PM | 5.2880 [10-35] | | | | | 43e51 22.96°N | 79e27 28.73°W | 227m |
| 69 | 4:31:25 PM | 2.3420 [10-35] | | | | | 43e51 22.96°N | 79e27 28.75°W | 227m |
| 70 | 4:31:31 PM | 3.8890 [10-35] | 4.0400 +/- 1.0820 | | | | 43e51 22.97°N | 79e27 28.78°W | 227m |

Data Organization



Data Visualization

GeoView is an easy-to-use data management and visualization software program that is compatible with all Windows operating systems.

It enables users to download, store and view a KT-10 meter's data on a PC and export it to Excel. Data is organized by date or by instrument serial number, when there are data from multiple meters. Averaged readings, voice notes, and GPS positions (when paired with a Bluetooth GPS unit) can also be reviewed.

The software can also be used as a data visualization tool. Numerical values from discrete measurements are displayed in a table format; data from scanned measurements are displayed as a graph.

Options

- **Upgrade a dedicated KT-10 v2 or KT-10 C to a KT-10 S/C Magnetic Susceptibility/Conductivity Meter.**
- **“Plus” Option for Magnetic Susceptibility Measurements:**
 - Increase measurement range to 10 SI units.
 - Obtain magnetite iron ore concentration estimates (%) directly from the display
- **“Cx” Option** to increase conductivity measurement range to 200,000 S/m
- **Magnetic Susceptibility Calibration Pads**
Two calibration pads are available to recalibrate the magnetic susceptibility measurements, or to verify the meter's readings. The calibration pads are available in low and high (“Plus” options only) susceptibility ranges.



KT-10 Plus v2

| | Low | High |
|---------------------------------------|--------------------------|----------------------------|
| Typical Nominal Susceptibility Values | 34 x 10 ⁻³ SI | 2500 x 10 ⁻³ SI |
| Diameter: | 145 mm | 145 mm |
| Height: | 70 mm | 70 mm |
| Weight: | 2.65 kg | 2.65 kg |
| Colour | Orange | Blue |



Magnetic Susceptibility Calibration Pads

- **Conductivity Reference Pads**
Three reference pads are available to verify conductivity measurements. Each pad has been independently tested using different methods for measuring conductivity (AC, DC and impedance bridges). The reference pads are available with low, medium and high conductivity ranges.

| | Low | Medium | High |
|-------------------------------------|--------|---------|------------|
| Typical Nominal Conductivity Values | 9 S/m | 700 S/m | 85,000 S/m |
| Diameter | 152 mm | 128 mm | 152 mm |
| Height | 50 mm | 50 mm | 50 mm |
| Weight | 1.2 kg | 1.0 kg | 1.8 kg |
| Colour | Red | Yellow | Green |



Conductivity Reference Pads

| Specifications | |
|-------------------------------------|---|
| Operating Frequency: | 10 kHz |
| Measurement Frequency: | 20 readings per second in Scan Mode, storing 4 averaged readings per second. |
| Display: | High contrast LCD display with 104 x 88 pixels |
| Memory: | 4 GB: 4,000 total records stored * * 4,000 scanner measurements, with up to 480 data points per record (total of 1,920,000 individual data points) Or * 4,000 discrete measurements, with 120 seconds of voice notes per reading. <i>Note: discrete and scan records can be combined.</i> |
| Control: | One button with up / down functionality |
| Data Input/Output: | USB and Bluetooth (GPS/phone pairing) |
| Power Supply: | 2 'AA' batteries (alkaline or rechargeable) |
| Battery Life: | Up to 2,000 measurements without voice recorder while using rechargeable batteries |
| Operating Temperature Range: | -20°C to 60°C |
| Meter Dimensions: | 200mm x 57 mm x 32 mm |
| Coil Dimensions: | Circular Coil: 65 mm (diameter) |
| | Rectangular Coil: 65 mm (length) x 30 mm (width) |
| Weight: | 0.33 kg with 2 'AA' alkaline batteries installed |

Specifications subject change without notice (25-02-16)

| Instrument Contents | | |
|---|---|---|
| KT-10 v2 & KT-10R v2 | KT-10 C & KT-10R C | KT-10 S/C & KT-10R S/C |
| (1) KT-10 or KT-10R Meter (2) Pins (circular coil designs only) (2) AA alkaline batteries (1) USB data transfer cable (1) Carrying pouch with foam Insert (1) GeoVision Android App (1) GeoView software CD (1) Operations manual (1) Quick reference guide | (1) KT-10 C or KT-10R C Meter (2) Pins (circular coil designs only) (2) AA alkaline batteries (1) USB data transfer cable (1) Carrying pouch with foam Insert (1) GeoVision Android App (1) GeoView software CD (1) Operations manual (1) Quick reference guide | (1) KT-10 S/C or KT-10R S/C Meter (2) Pins (circular coil designs only) (2) AA rechargeable batteries & charger (1) USB data transfer cable (1) Carrying pouch with foam Insert (1) GeoVision Android App (1) GeoView software CD (1) Operations manual (1) Quick reference guide (1) Rugged transportation case |
| | | |