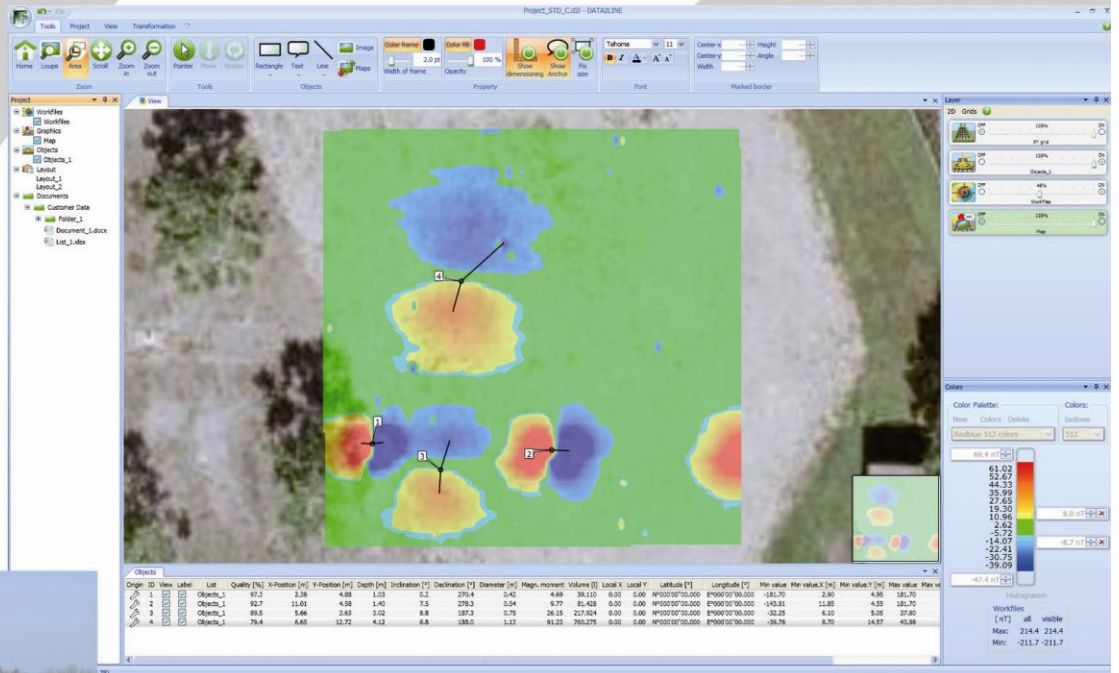


# DATA2LINE<sup>®</sup> 4.810



Your partner for UXO and landmine detection



## Application

The DATA2LINE<sup>®</sup> software is a complete solution for managing, displaying, analysing and documenting location-specific measurement data.

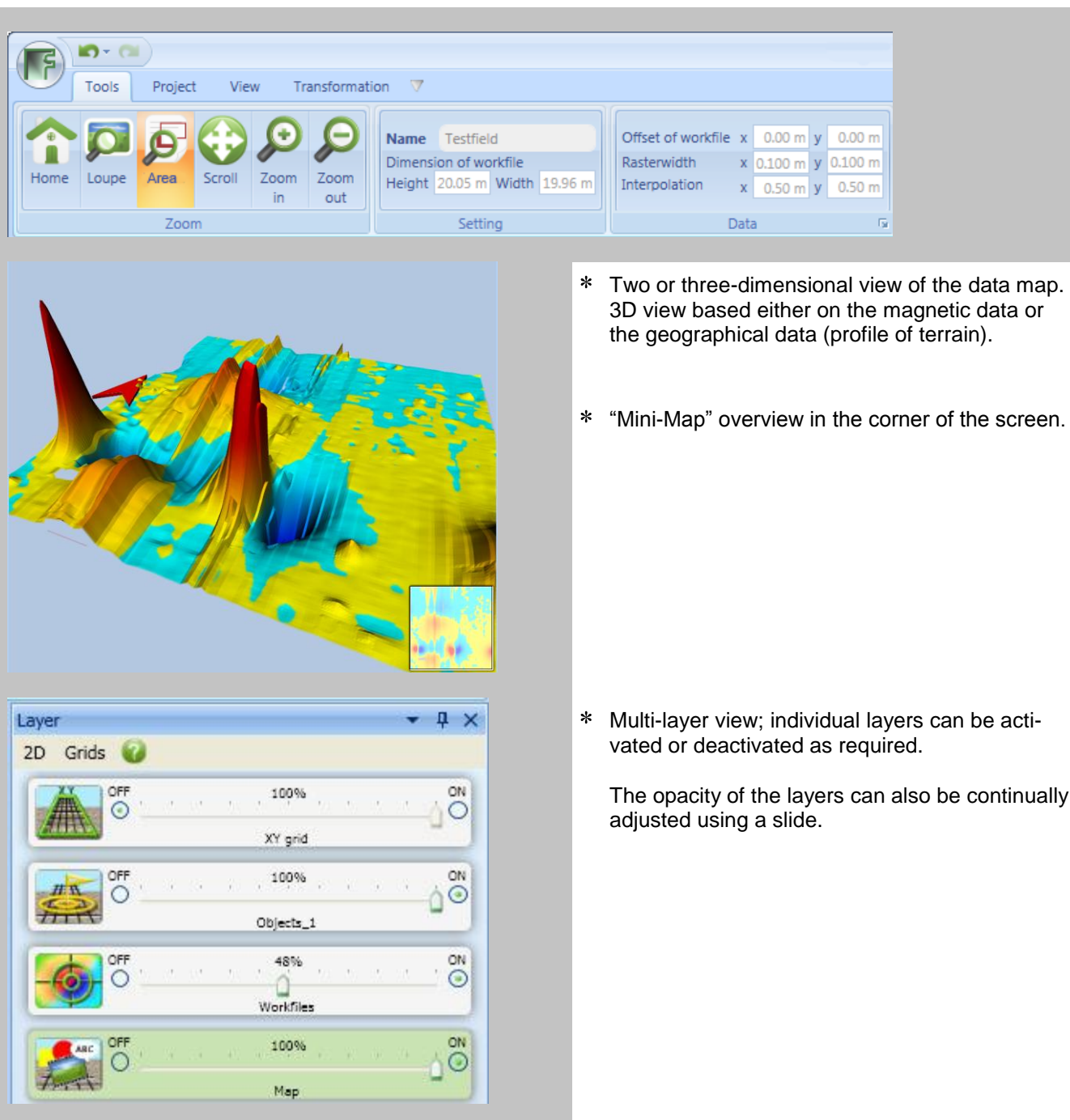
The DATA2LINE<sup>®</sup> Basic starter module contains the complete project management functionality including data post processing, mapping and report generation.

The UXO programme module, with its highly-accurate object calculation, management of object lists and the option of filtering measurement data, is an indispensable tool when detecting unexploded ordnance (UXO).

Additional programme modules will extend the range of applications and turn DATA2LINE<sup>®</sup> into a “specialist” device, for example for borehole searches and archaeological/geological explorations.

State-of-the-art programming tools and an innovative concept provide a future-proof platform.

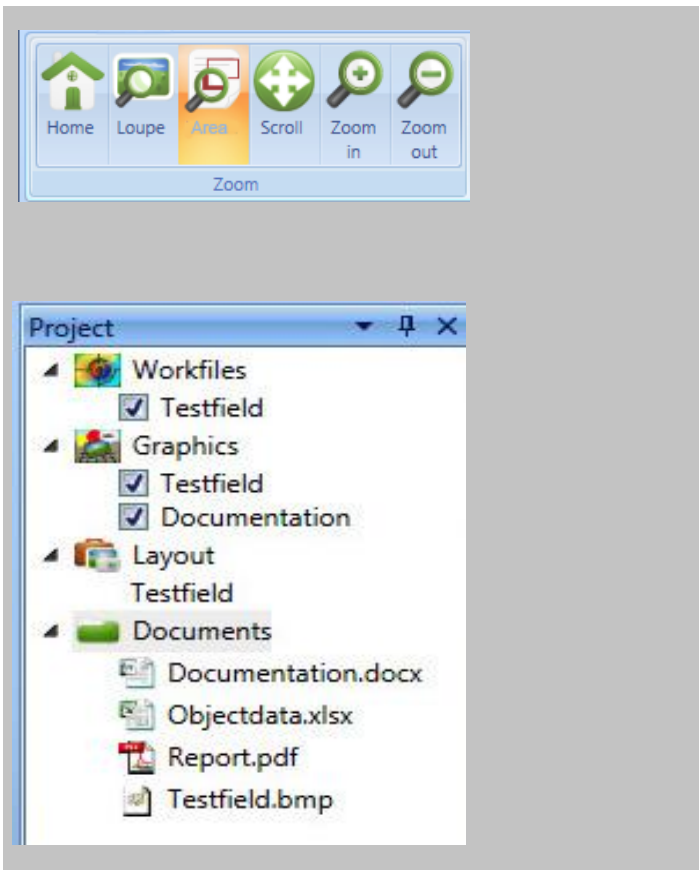
## Features of the DATA2LINE<sup>®</sup> software



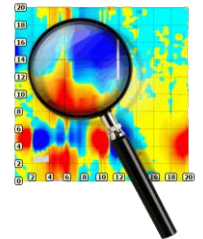
The screenshot displays the DATA2LINE software interface. At the top, there is a menu bar with 'Tools', 'Project', 'View', and 'Transformation'. Below the menu is a toolbar with icons for Home, Loupe, Area, Scroll, Zoom in, and Zoom out. To the right of the toolbar is a 'Setting' panel with fields for Name (Testfield), Dimension of workfile (Height 20.05 m, Width 19.96 m), and Data parameters (Offset of workfile, Rasterwidth, Interpolation). The main area shows a 3D terrain map with a color gradient from blue to red. A 'Mini-Map' overview is visible in the bottom right corner of the map area. Below the map is a 'Layer' control panel with four layers: '2D Grids' (OFF, 100%), 'XY grid' (OFF, 100%), 'Objects\_1' (OFF, 100%), and 'Workfiles' (OFF, 48%). The 'Map' layer is currently ON at 100% opacity.

- \* Two or three-dimensional view of the data map. 3D view based either on the magnetic data or the geographical data (profile of terrain).
- \* “Mini-Map” overview in the corner of the screen.
- \* Multi-layer view; individual layers can be activated or deactivated as required.

The opacity of the layers can also be continually adjusted using a slide.



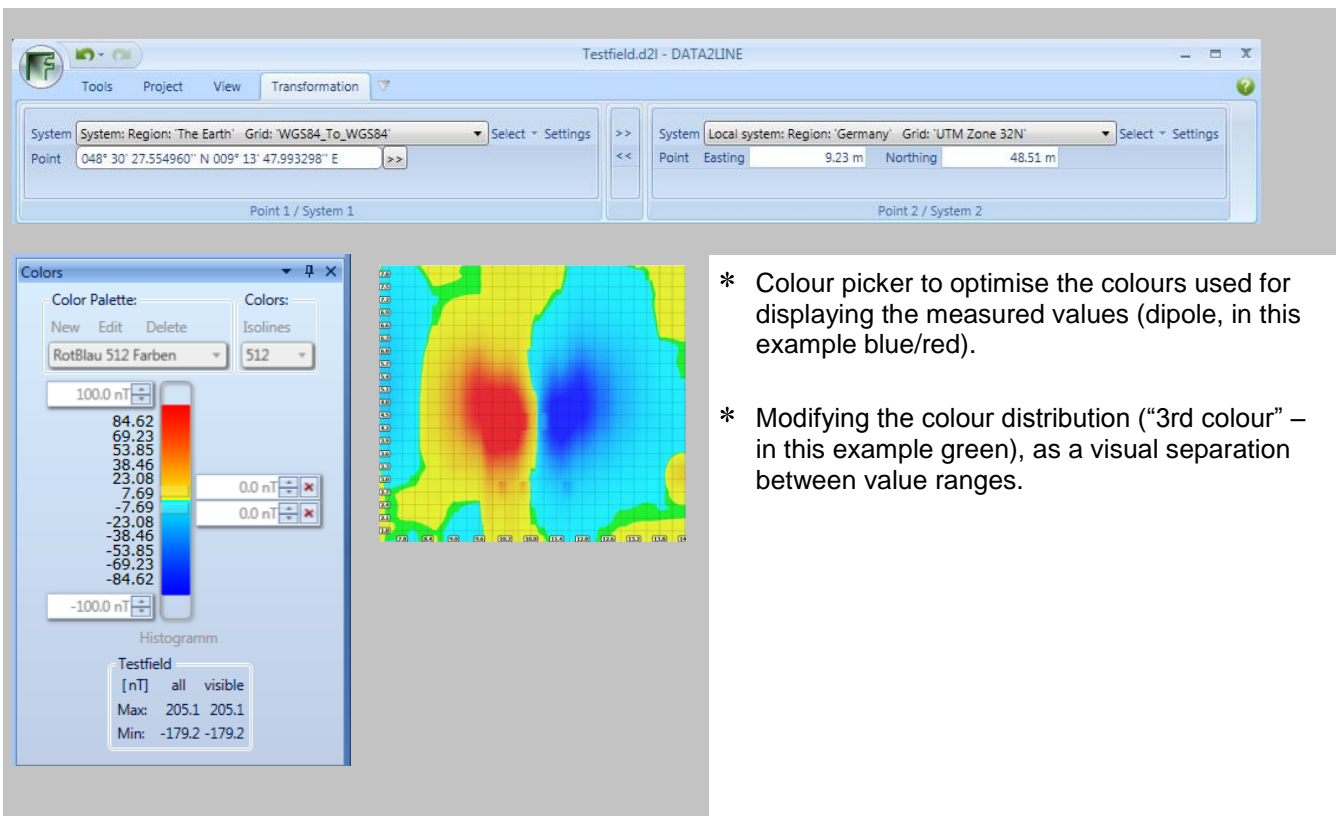
\* Various zoom functions



\* Project view including

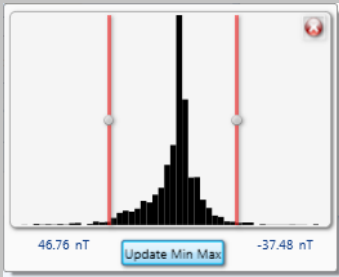
- Workfiles (Data)
- Graphics
- Layout
- Images (\*.bmp), Word documents (\*.docx)
- Excel lists (\*.xlsx) and reports (\*.pdf)

- \* Project management; creating subfolders in the "Documents" folder
- \* Documents (\*.docx, \*.xlsx, \*.pdf, \*.bmp) can be opened and processed directly from the document list
- \* "Snap-shot" function.
- \* Access to raw data and individual results after compensation
- \* Entering position data into the local system or the WGS 84 system
- \* Transformation of coordinates



\* Colour picker to optimise the colours used for displaying the measured values (dipole, in this example blue/red).

\* Modifying the colour distribution ("3rd colour" – in this example green), as a visual separation between value ranges.

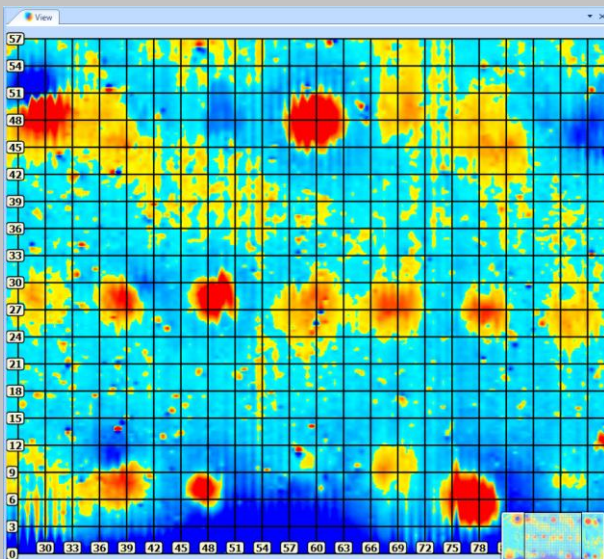


- \* Histogram function to support optimum colour distribution adaptation.

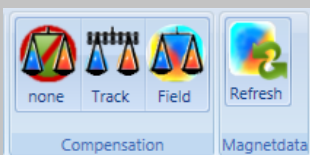


- \* Showing maps or graphics on a separate layer.
- \* Inserting shapes/graphics (objects), such as a rectangle, line, image, map, ESRI® shapes (\*.shp), speech bubble with text comment or image.

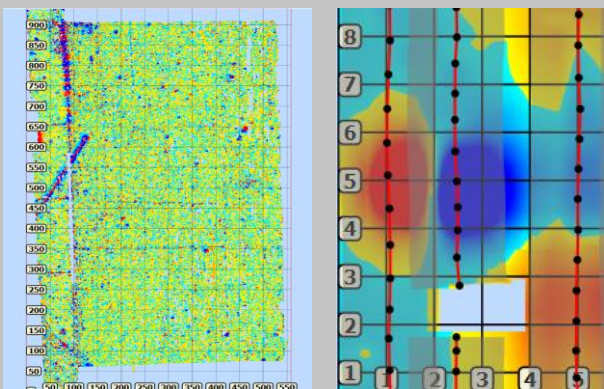
The colour, colour fill, covering capacity and font can be chosen individually.



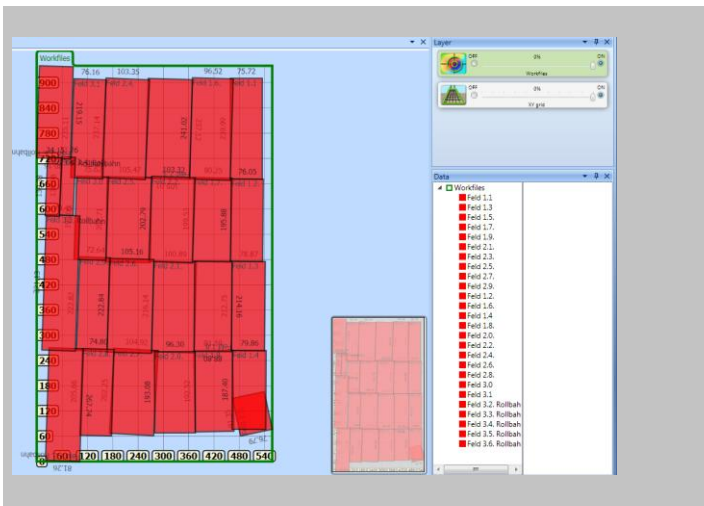
- \* Free scalable grids are shown as layers that can be adapted separately.
- \* Measurement data can be georeferenced and displayed as anomaly map.



- \* Various compensation options.



- \* Processing large data files  
The memory capacity of modern hardware can be fully utilised (thanks to intelligent data handling, DATA2LINE® makes virtually no restrictions)
- \* Mapping data sets based on single tracks (profiles)

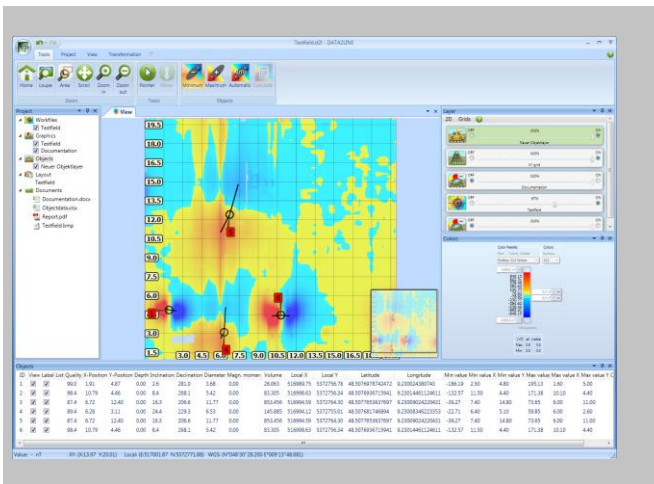


- \* Individual data files can easily be merged and arranged

- \* Various data export formats, e.g. \*.txt, \*.equ, \*.uxo (UXO 100 format), \*.XYZ format.
- \* Data import
- \* Printing function

### Additional features of the DATA2LINE® software “UXO”

- \* Filter function for selecting different object sizes on the basis of the measured values in nT
- \* Automatic object calculation



- \* Calculation of the object coordinates, position and size of suspected ferromagnetic objects; object depth with indication of a quality number

### Minimum requirements for the PC/laptop

- \* 32-bit operating system, Windows 7 (recommended), Vista or XP SP 3
- \* Processor, 3 GHz clock rate, 1 core (Dual/quad core CPU recommended)
- \* 2 GB RAM (4 GB recommended)
- \* Graphics card with hardware acceleration (DirektX 10 compliant graphics card recommended)
- \* Mouse with scroll wheel (recommended)
- \* 1 RS 232 serial interface for the data transfer cable (Datalogger – PC)
- \* 1 USB interface 2.0 for the dongle
- \* CD/DVD drive
- \* Adequate hard drive size (depending on planned project size/data volume to be saved)
- \* DotNet Framework 3.5 SP1, MS Word, MS Excel etc. (recommended).

For support please contact:

Institut Dr. Foerster GmbH & Co. KG  
Division DM Detection Systems and Magnetics  
In Laisen 70  
72766 REUTLINGEN  
GERMANY

Phone + 49 7121 140-312

Fax + 49 7121 140-280

[DM@foerstergroup.de](mailto:DM@foerstergroup.de)

<http://www.foerstergroup.de>



Changes with respect to data and illustrations reserved

Edition 03/11  
Author STÖ  
Order No.1948458

---

### Scope of delivery/order information

- \* CD with DATA2LINE® software, Acrobat Reader and DotNet Framework 3.5 SP1 (administrator rights required), German and English Operating Instructions as a pdf file for all programme versions as well as an Online help.
- \* Dongle (licence) for the software you have purchased

Name, software	Details	Order-No.:
DATA2LINE® 4.810 DEMO	With Hardlock and CD	1948563
DATA2LINE® 4.810 Module BASIC	Full license Basic version	1948571
DATA2LINE® 4.810 Module UXO	Full license Upgrading: object calculation and filter function (magnet data)	1948580